

Features

super small size : 24.0*16.0*6.5mm(not including antenna

super light : 1.85g(not including power cables and motor connectors)

working voltage:7.4~11.1V

Comes with a built-in 7A/2S or 5A/3S brushless ESC

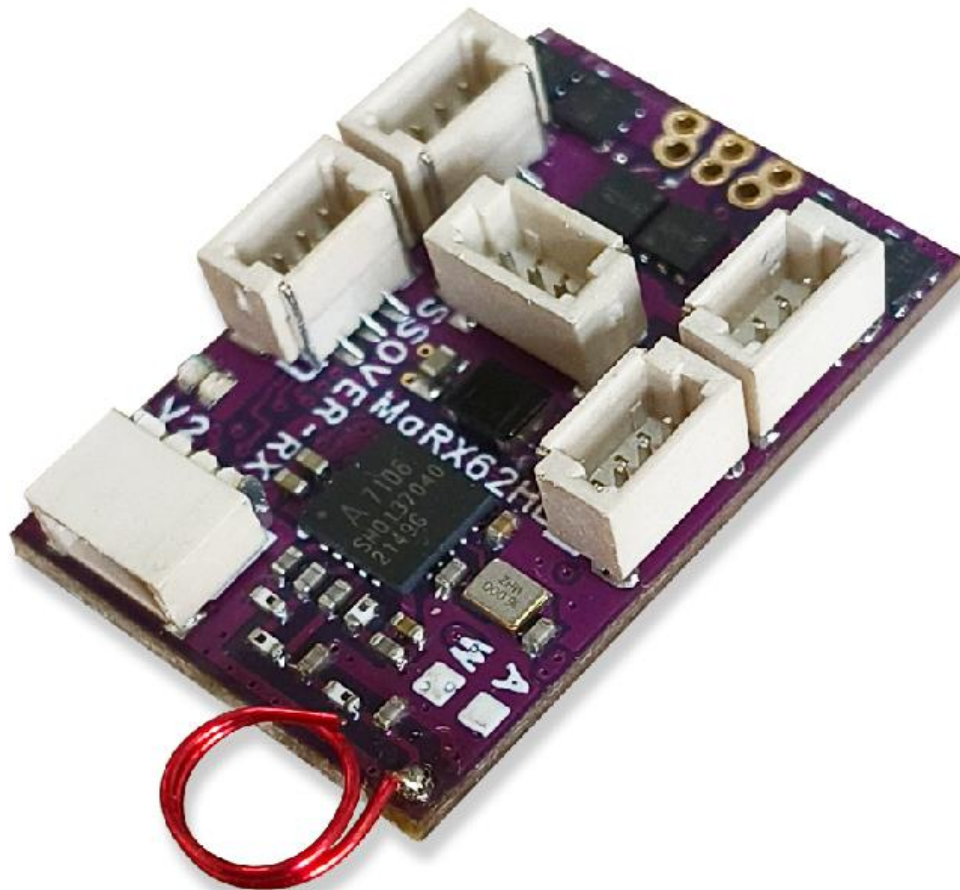
Built-in DCDC buck circuit(2.2A/3.9V)

Supports double aileron mode(reversed)

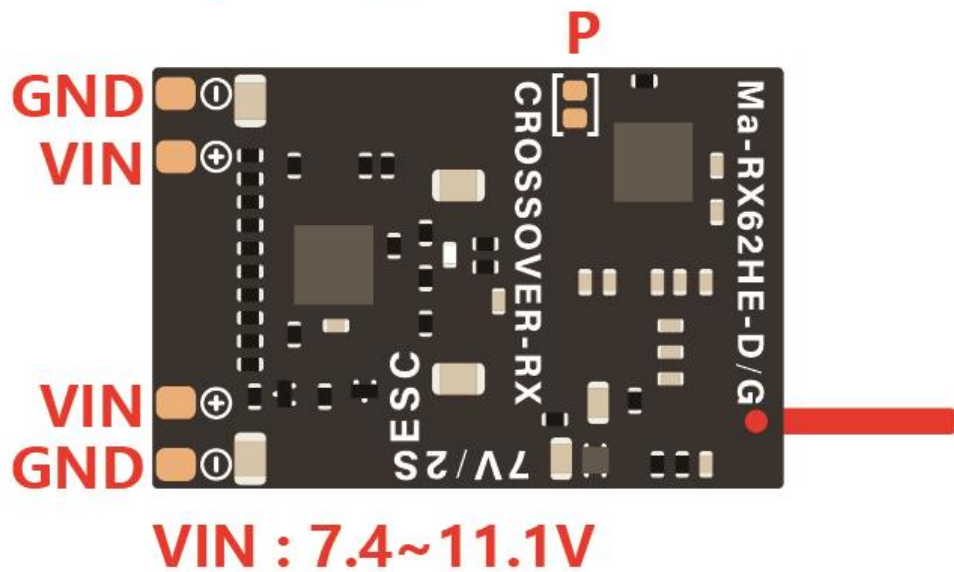
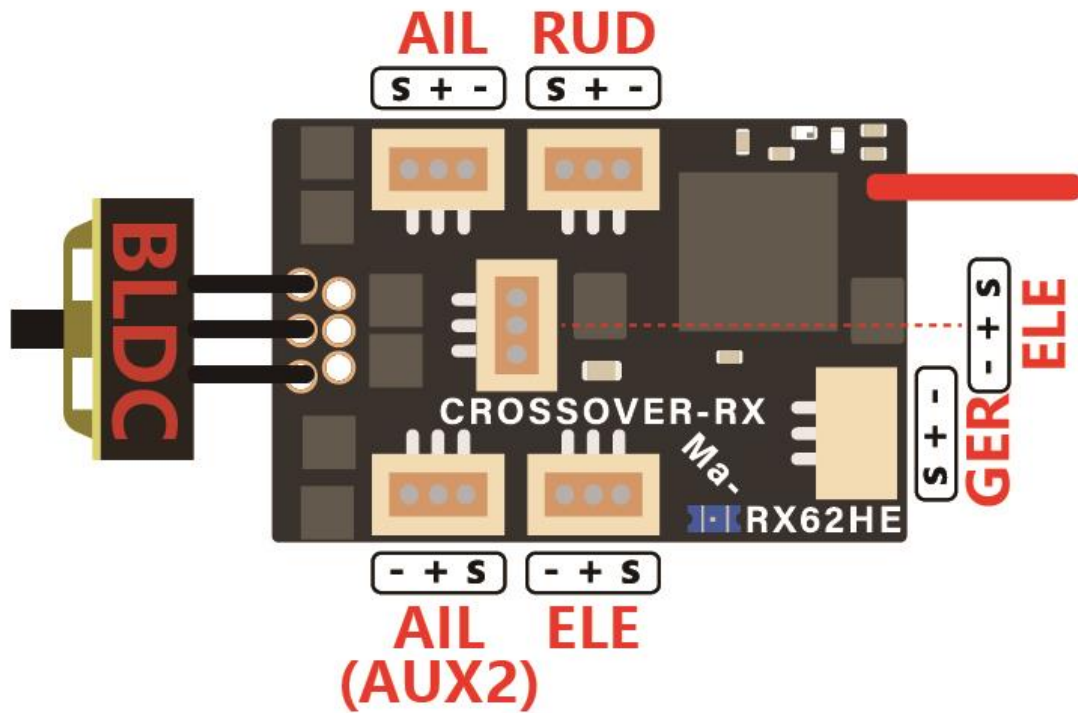
Auto binding

Supports TELEM function(D, F2, A, versions support TELEM function)

1.0mm 3P servo connectors



Connection Diagram



Auto binding

As it is difficult to reach the binding button when the receiver has been installed inside the plane, we developed self-binding function, it works like this: The receiver will enter binding mode automatically after powered and no signal for 15 seconds (slow flashing LED light turns to fast flashing), then complete the binding operation according to your transmitter binding manual.

Double ailerons mode

Double-aileron mode is developed for those model airplanes using double ailerons. This function can simplify servo wiring connection and transmitter set up. Default is double-aileron mode, you can turn off

double-aileron mode by short connect P ports on the above picture, then AIL2 will be set as AUX2 output.

TELEM function(only D, F2, A, H version support)

TELEM function is useful on monitoring battery voltage, receiver working voltage and its signal strength as well as its working temperature in real time, through which customer can get working state of receiver and battery discharging state under control, so flying out of control range and over discharging will rarely happen (for brushless motor rotation speed or flight height monitoring, customer needs to choose a more advanced receiver)

NOTE: The effective control range of TELEM function depends on transmitter, it is possible that this would happen: the working range of the receiver is far more than TELEM function effective range, it is normal and alright!

Ma-RX62HE-X series receivers have the following 8 versions

	TypeS	Protocol	Built-in brushless ESC (7A/2S or 5A/3S)	TELEM function
Basic version	Ma-RX62HE-D	DSMX/2	✓	✗
	Ma-RX62HE-S	SFHSS	✓	✗
	Ma-RX62HE-F1	FRSKY-D8	✓	✗
	Ma-RX62HE-F2	FRSKY-D16	✓	✗
	Ma-RX62HE-A2	AFHDA-2A	✓	✗
Advanced version	Ma-RX62HE-D+	DSMX/2	✓	✓
	Ma-RX62HE-F2+	FRSKY-D16	✓	✓
	Ma-RX62HE-A2+	AFHDA-2A	✓	✓