

MXL-RX62H-X V3.1 Series RX Manual

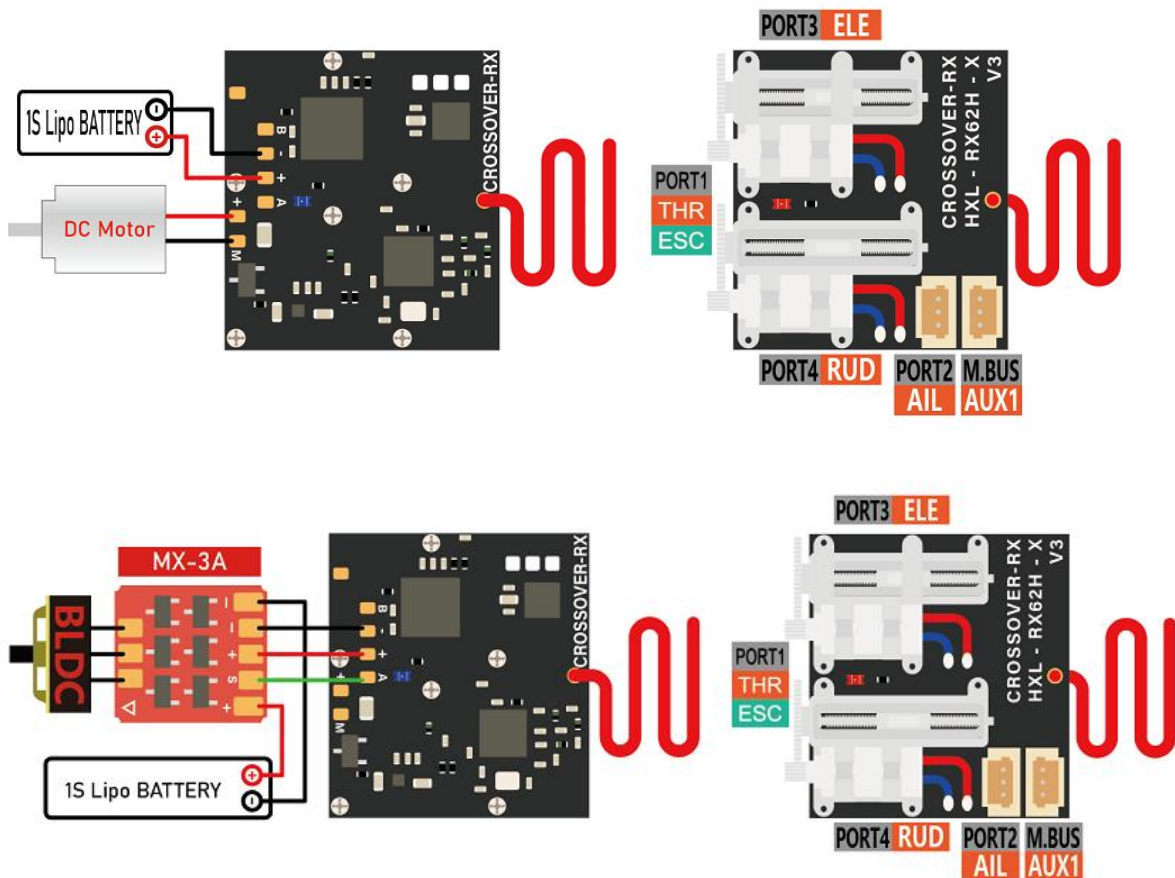
Thanks for using CROSSOVER-RX receivers, please read the manual carefully before use!

MXL-RX62H-X V3.1 series products are newly designed compatible receivers for miniature model aircraft. It integrates 2 linear servos, 2 external independent servo interfaces, one built-in 5A brushed ESC output interface, one brushless ESC signal interface. This series of receivers is small in size and light in weight, so users can easily install it on miniature model aircraft. At present, there are 8 versions in total, and some versions support the TELEM function.

Features :

- Ultra-small size: 24.3*24.0*7.8mm (excluding antenna);
- Ultra light weight: 3.5g (including power cord);
- Working voltage: 3.0~5.0V;
- Built-in 5A/1S brushed ESC (with start-lock function);
- Automatic frequency matching;
- D+, F2+, A2+, versions support TELEM function;
- Support online firmware upgrade;
- Support GUI setting function;

Interface :



Built-in brushed ESC start-up locking function:

The built-in brushed ESC start-up locking function is to prevent the brushmotor from starting incorrectly. With this function added, the brushmotor does not start when the receiver is powered on and does not change the throttle lever position on the radio. After the receiver is powered on and the receiver receives a signal, when the throttle lever on the radio is first held at the lowest position for about 2 seconds (at this time the LED on the receiver darkens by about 2S and then lights up), the built-in brushed ESC start-up lock is released, and then the throttle lever can be pushed to start the brush motor.

Auto Binding :

In order to solve the problem that the BIND switch cannot be pressed after the receiver is installed inside the aircraft, we have developed the automatic BIND function. When the receiver does not receive a signal within 10 seconds after it is powered on, the receiver will automatically enter the BIND mode (the LED on the receiver changes from slow flashing to fast flashing), and then complete the frequency binding according to the BIND operation of the remote control.

TELEM Function (only D+, F2+, A2+version support) :

The TELEM function can realize real-time monitoring of battery voltage, receiver working voltage, receiver RSSI intensity and receiver working temperature, allowing users to grasp the receiver's working status and battery discharge in real time, so as to avoid flying out of the remote control distance and battery over-discharge, etc. (if you need to monitor the speed of the brushless motor or the flight altitude, please choose a more advanced model of the receiver).

Note: The effective distance of the TELEM function is related to the remote control itself, and the working distance of the receiver may be much higher than the effective distance of the TELEM function --- this is normal.

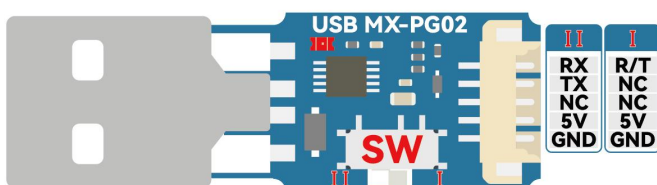
M.BUS Interface :

M.BUS interface is a multi-function interface: 1) FW upgrade/Function setting interface; 2) Output channel signal; 3) Output SBUS signal; 4) Connect other sensors (under development);

Note: It is forbidden to connect the battery to the receiver when the PC is connected to the M.BUS interface.

How to connect RX to GUI software :

Users need a USB programmer (USB MX-PG02, set the switch on the programmer to I position when using it on MXL-RX62H-X) before using GUI software to configure receiver functions or upgrade firmware. One end is connected to the M-BUS interface of the receiver, the other end is connected to the PC, open the GUI software, select the correct port, click "Connect", and each configurable function module on the receiver will load and display the current setting information of the receiver.



GUI software download link : update.crossover-rx.com/mxo.zip

Parameter setting (using CrossOver-RX Tool software):

Please refer to "About RX Function Setting Instructions".

If you need the version with integrated gyro, please search for "MXL-RX62H-X-G";

If you need the version with integrated brushless ESC, please search for "MXL-RX62H-X-G".

Product Versions :

Model	Compatible Protocols	Brushed ESC (5A/1S)	TELEM
MXL-RX62H-D V3.1	DSMX/2	✓	
MXL-RX62H-S V3.1	SFHSS	✓	
MXL-RX62H-F1 V3.1	FRSKY-D8	✓	
MXL-RX62H-F2 V3.1	FRSKY-D16	✓	
MXL-RX62H-A2 V3.1	AFHDS-2A	✓	
MXL-RX62H-D+ V3.1	DSMX/2	✓	✓
MXL-RX62H-F2+ V3.1	FRSKY-D16	✓	✓
MXL-RX62H-A2+ V3.1	AFHDS-2A	✓	✓

Please contact us if you have any feedback or suggestions, thank you!

Website: www.mxo-rc.com

Email: mxo@mxo-rc.com or info@crossover-rx.com